

**SEA KING**

**OUTBOARD  
MOTOR**

**PARTS CATALOG**

MW-31

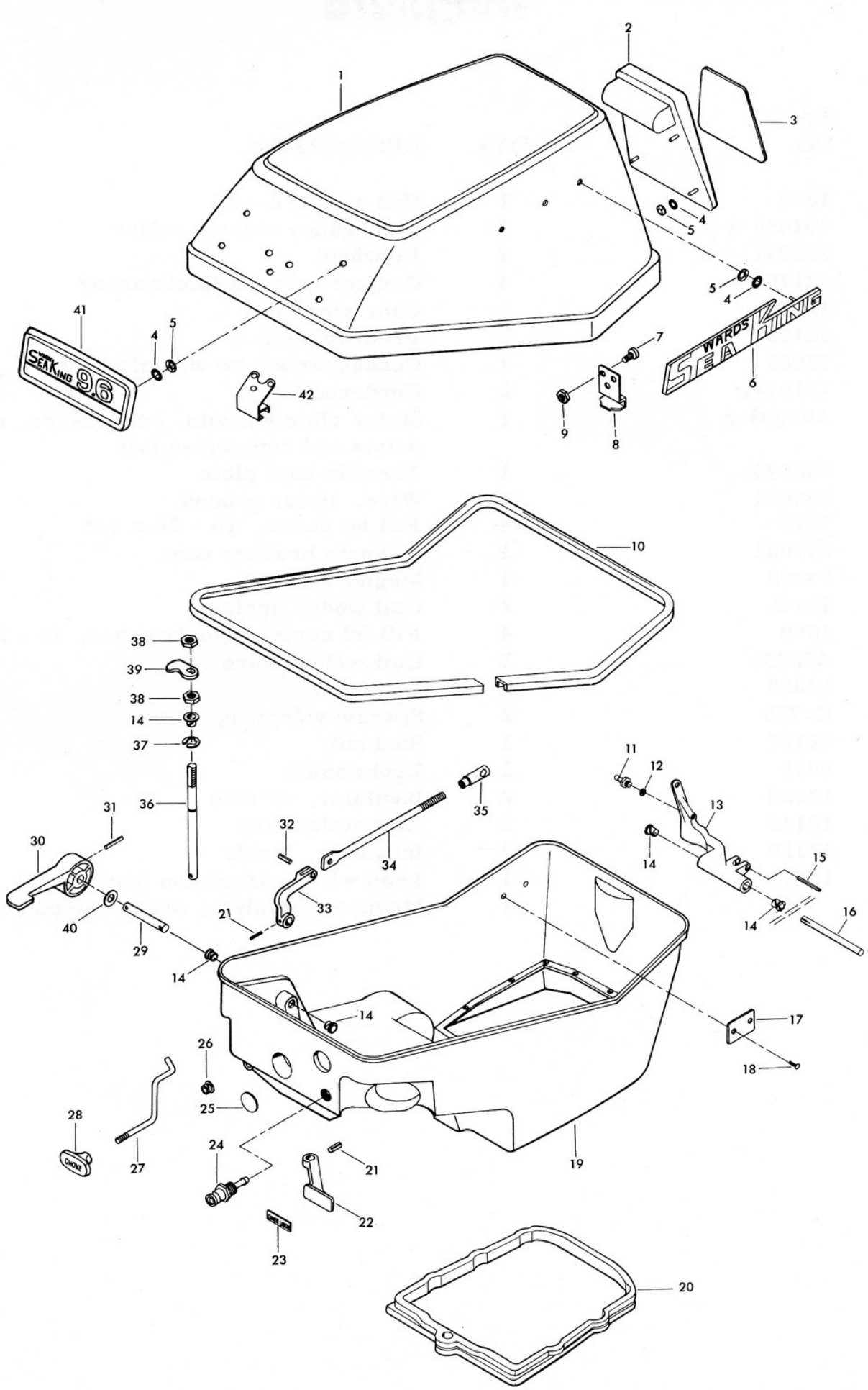
**9.6**  
**HORSEPOWER**

**MODEL**  
**VWB-27009A**

Printed in U.S.A.

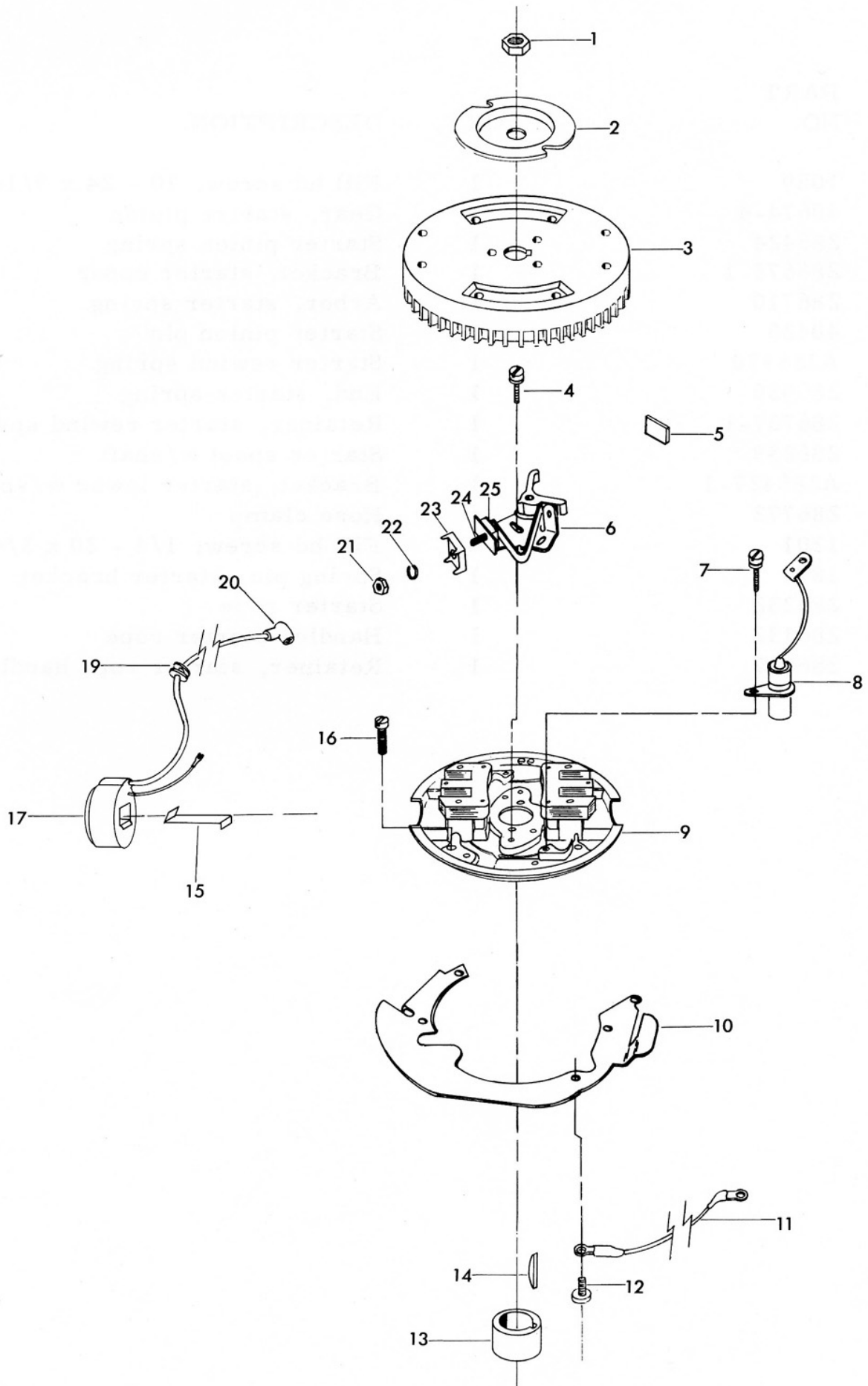
1/70

**SEA KING** — SOLD EXCLUSIVELY BY **MONTGOMERY WARD**



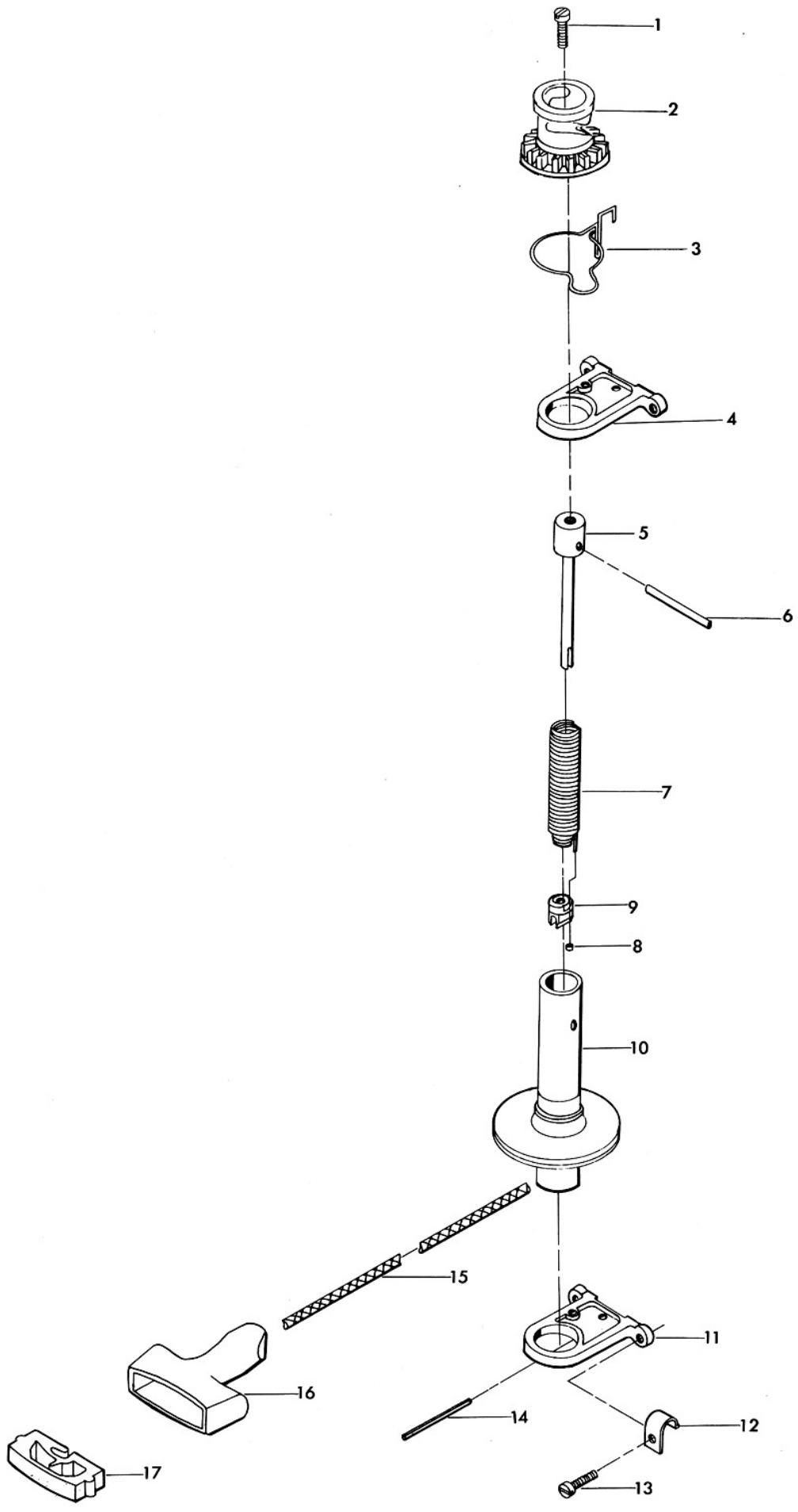
# Engine Cover and Support Plate

ILLUS. NO.	PART NO.	QTY.	DESCRIPTION
1	S392712	1	Cover, engine w/bracket and retainer
2	392269	1	Handle, tilt
3	392180	1	Trim, engine cover, rear
4	85735	15	Seal, medallion
5	1753	15	Fastener
6	392366	2	Plate, name "Sea King"
7	1475	6	Fill hd screw, 10 - 24 x 1/2
8	A392480	1	Retainer, engine cover w/screws and nut
9	7011	6	Elastic stop nut, 10 - 24
10	392756	1	Packing, support plate
11	98273	1	Stud, gear shift rod connector
12	8058	1	Internal tooth lockwasher
13	286876	1	Lever, gear shift
14	307818	6	Bearing
15	8542	1	Spring pin
16	286871	1	Pin, gear shift lever
17	A197395-2	1	Plate, identification w/screws
18	1293	2	Drive screw
19	A392038	1	Plate, support
20	286989-1	1	Seal, support plate
21	8547	2	Spring pin
22	392469	1	Handle, cover latch
23	392585	1	Decal, cover latch
24	197767-1	1	Bushing, fuel line
25	343226	1	Plug
26	197319	1	Bearing, choke rod
27	392503	1	Rod, choke
28	392547	1	Knob, choke
29	392417	1	Shaft, gear shift handle
30	392614	1	Handle, gear shift
31	8549	1	Spring pin
32	8552	1	Spring pin
33	392619	1	Lever, shift handle shaft
34	392611	1	Rod, gear shift
35	286685	1	Connector, gear shift rod
36	392763	1	Shaft, cover latch
37	73741-1	1	Retaining ring
38	1518	2	Jam nut, 5/16 - 18
39	392777	1	Cam, cover latch
40	8049	1	Bowed washer
41	392711	1	Plate
42	A392774	1	Bracket, cover latch w/screws and nuts
	392400	1	Decal, gear shift (not shown)



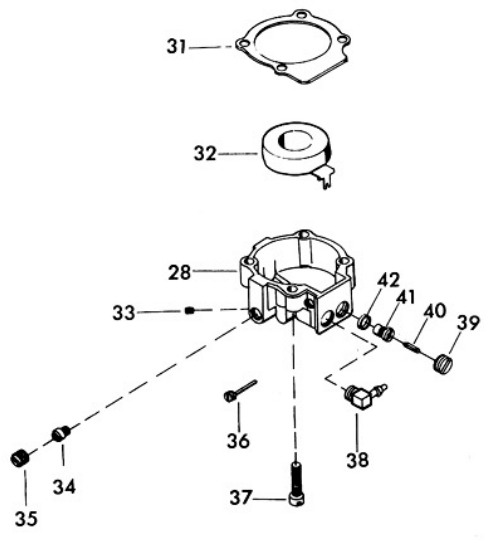
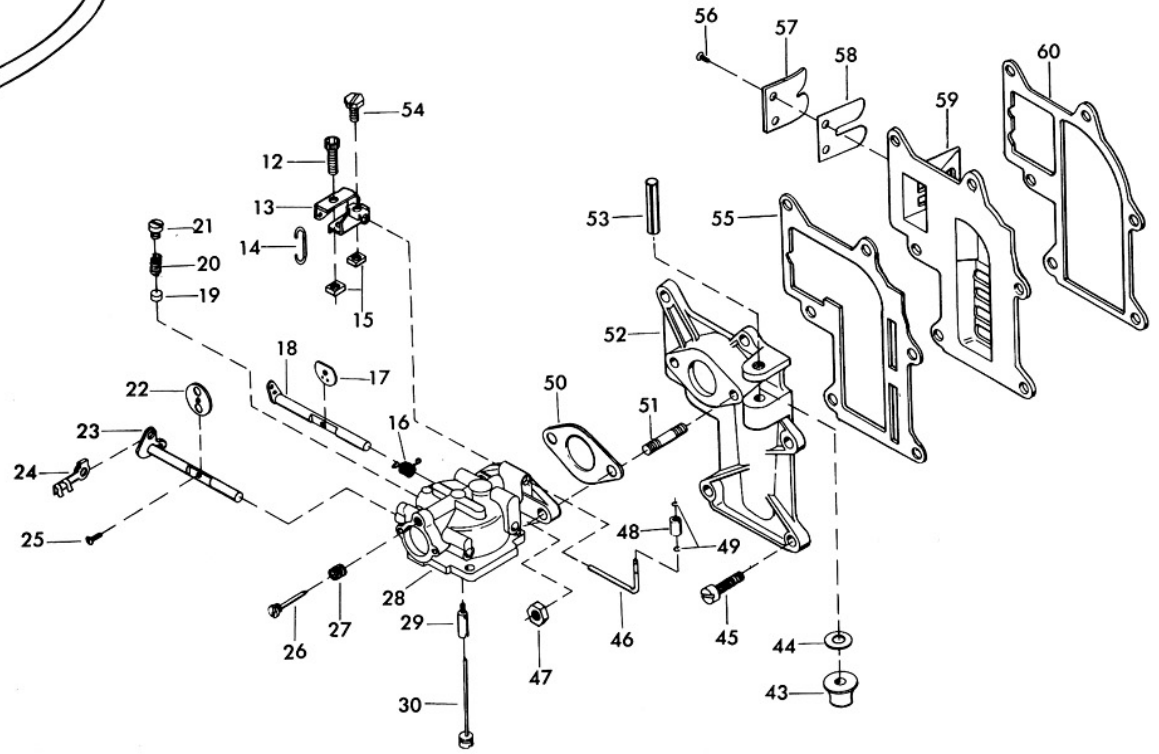
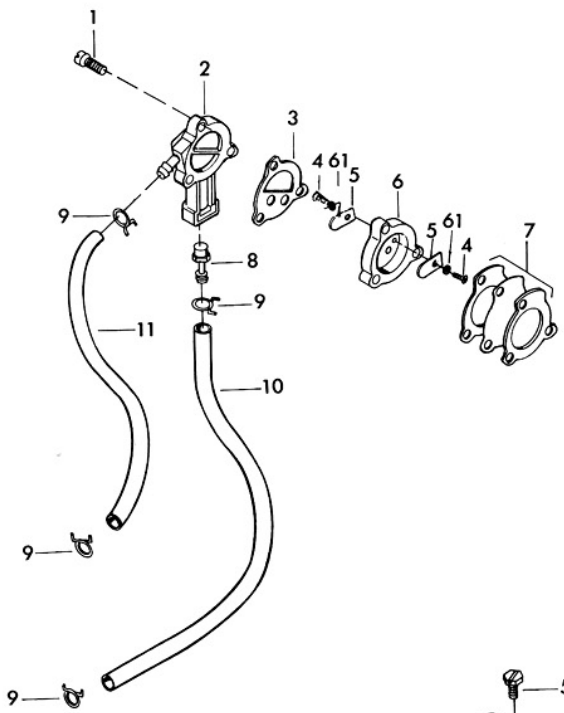
# Magneto

ILLUS. NO.	PART NO.	QTY.	DESCRIPTION
1	1809	1	Hex nut, 1/2 - 20
2	901456-1	1	Emergency starter collar
3	302097	1	Flywheel
4	12170	4	Contact screw w/lockwasher
5	12228	1	Cam wiper felt
6	12153	2	Breaker point set
7	12083	1	Condenser screw w/lockwasher
8	12181-1	2	Condenser
9	A59095-2	1	Stator plate w/coils, condensers, screws points and cam wiper felt
10	286192	1	Throttle cam plate
11	289664	1	Wire, stator ground
12	1075	4	Fill hd screw, 10 - 24 x 1/2
13	217002	1	Magneto breaker cam
14	54498	1	Magneto key
15	12146	2	Coil wedge spring
16	1090	4	Fill hd screw w/lockwasher, 10 - 24 x 9/16
17	A12231	2	Coil w/lead wire
19	12088	4	Grommet
20	K-750	2	Sparkie w/spring
21	12127	2	Stud nut
22	8055	2	Lockwasher
23	12128	2	Insulator, outside
24	12142	2	Connection stud
25	12129	2	Insulator, inside
	12091	1	Lead wire marker top (not shown)
		1	Magneto complete, order component parts



# Starter

ILLUS. NO.	PART NO.	QTY.	DESCRIPTION
1	1089	1	Fill hd screw, 10 - 24 x 9/16
2	40674-4	1	Gear, starter pinion
3	286424	1	Starter pinion spring
4	286675-1	1	Bracket, starter upper
5	286710	1	Arbor, starter spring
6	40425	1	Starter pinion pin
7	A286970	1	Starter rewind spring
8	286930	1	End, starter spring
9	286737-1	1	Retainer, starter rewind spring
10	286239	1	Starter spool w/shaft
11	A286427-1	1	Bracket, starter lower w/spring pin
12	286772	1	Hose clamp
13	1201	4	Fill hd screw, 1/4 - 20 x 3/4
14	1875	1	Spring pin, starter bracket
15	286232	1	Starter rope
16	286132	1	Handle, starter rope
17	286817	1	Retainer, starter rope handle



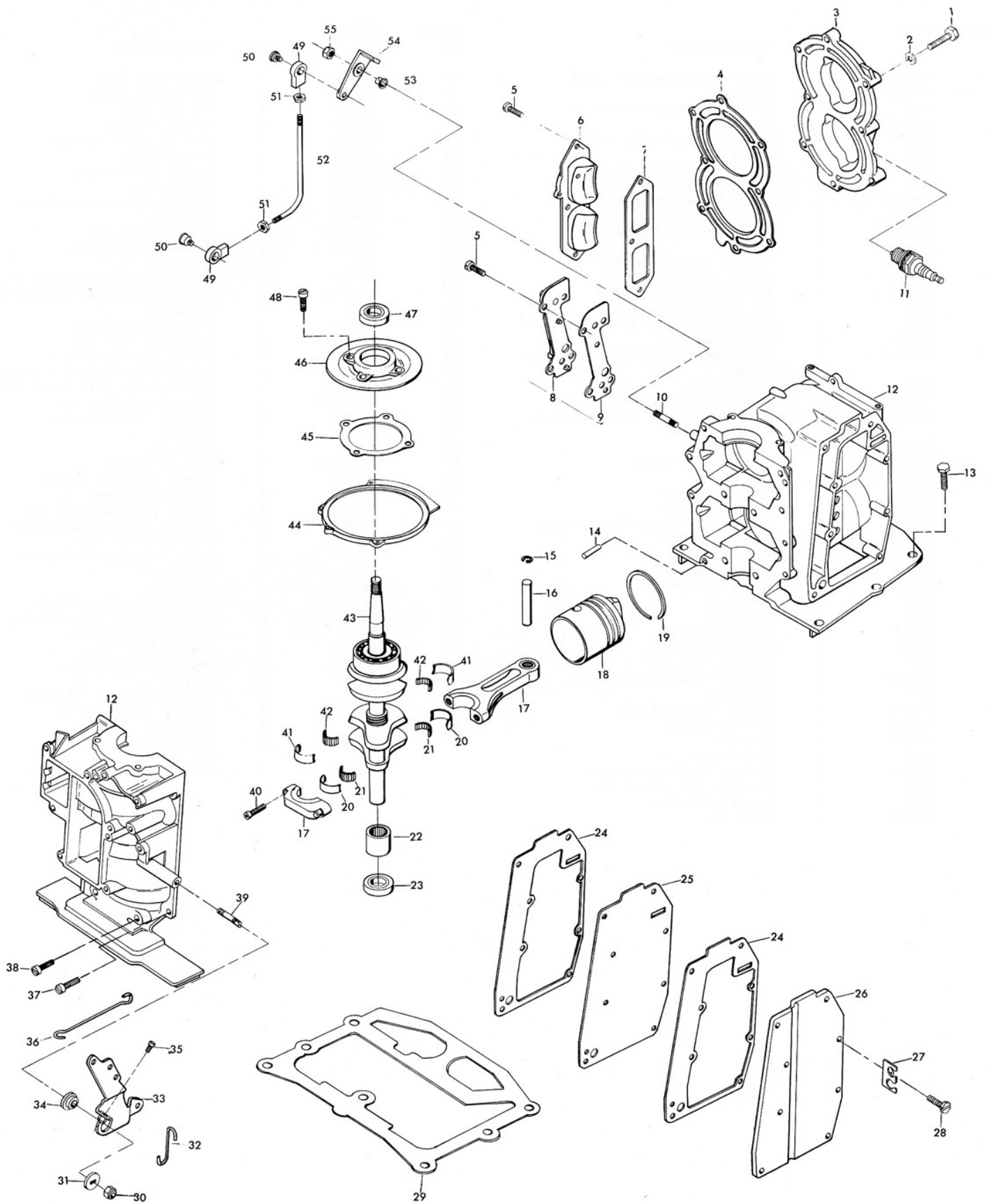


# Fuel System

PART NO.	QTY.	DESCRIPTION	ILLUS. NO.	PART NO.	QTY.	DESCRIPTION
1069	3	Fill hd screw, 10 - 24 x 1 1/16	36	* 011859	1	Float lever pin
901746	1	Fuel pump cover	37	06062	4	Fill hd screw, 8 - 32 x 1
24748	1	Gasket, fuel pump	38	27314-2	1	Connector carburetor
1286	2	Pan hd screw, 4 - 40 x 3/16	39	07896	1	Plug screw
18160-1	2	Reed fuel pump	40	011647	1	Inlet needle
A24757-3	1	Fuel pump reed plate w/reeds and screws	41	* 010461	1	Inlet needle seat and gasket
			42	02510	1	Gasket
2A24747-1	1	Fuel pump diaphragm w/gaskets	43	286435	1	Pulley starter rope
901811	1	Fuel pump filter	44	1847	1	Washer pulley
2706772	4	Hose clamp	45	1201	6	Fill hd screw, 1/4 - 20 x 3/4
A84253	1	Fuel line w/clamps	46	286316	1	Throttle cam follower
40253	1	Fuel line	47	1490	2	Hex nut, 1/4 - 20
1834	1	Fill hd screw, 10 - 24 x 7/8	48	78318	1	Roller, throttle cam follower
286190	1	Arm carb. adjusting	49	78410	2	Retainer
66193	1	Throttle link	50	18906	1	Carburetor gasket
1365	2	Square nut, 10 - 24	51	19209-2	2	Stud, carburetor
* 08647	1	Throttle return spring	52	A343167	1	Manifold w/studs
014671	1	Throttle shutter	53	1876	1	Spring pin
010378	1	Throttle shaft and lever	54	1558	1	Hex slot hd screw, 10 - 24 x 3/16
* 05454	1	Choke friction plunger	55	286168	1	Gasket, manifold
* 03860	1	Choke friction spring	56	1298	8	Rd hd screw, 6 - 32 x 1/4
* 07912	1	Choke friction screw	57	31161	4	Reed stop
014670	1	Choke shutter	58	31160-1	4	Reed
014669	1	Choke shaft and lever	59	A286158	1	Reed plate w/reeds, stops and screws
341384	1	Retainer				
* 05204	2	Choke and throttle shutter screw	60	286159	1	Gasket reed plate
* 012986	1	Idle adjustment screw	61	8003	2	Plain washer
* 011103	1	Idle adjustment screw spring		286061	1	Carburetor complete MD-144A
	1	Carburetor complete order 286061		* GS214	1	Gasket, set, carburetor (not shown)
* 010454	1	Nozzle				
014812	1	Bypass tube		RK821	1	Repair parts kit, carburetor (not shown)
07903	1	Body gasket				
07804	1	Float				
* 03311	1	Headless set screw				Asterisk (*) indicates contents c
01102	1	Headless plug screw				Repair Parts Kit.
011395	1	Main fuel jet .059"				

## OPTIONAL SIZE MAIN FUEL JETS (Use Only At Altitudes Indicated)

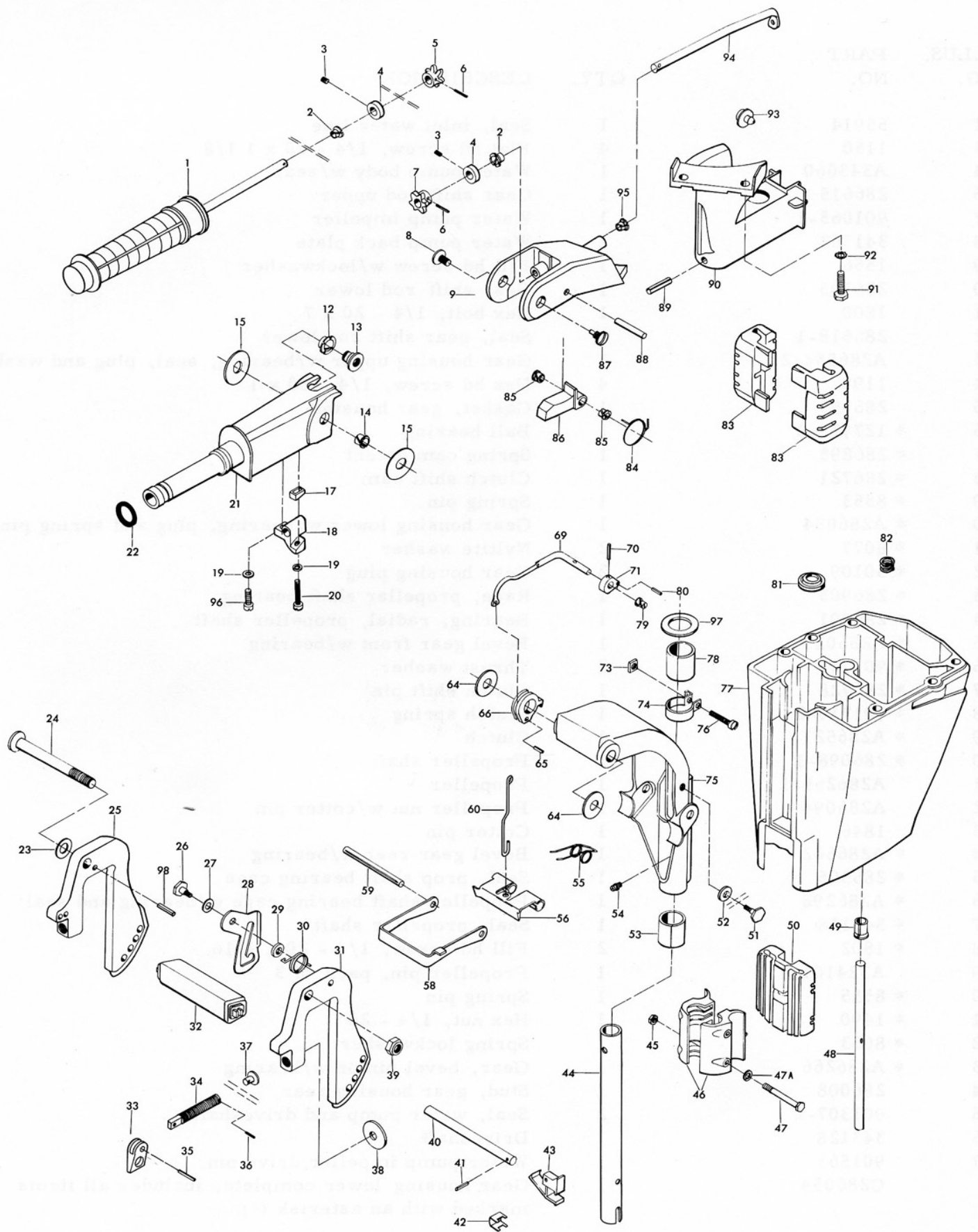
	Std.	1250-3750 Ft.	3750-6250 Ft.	6250-----Ft.
Size	.059	.055	.051	.049
Part No.	011395	011722	011764	011763



# Power Head

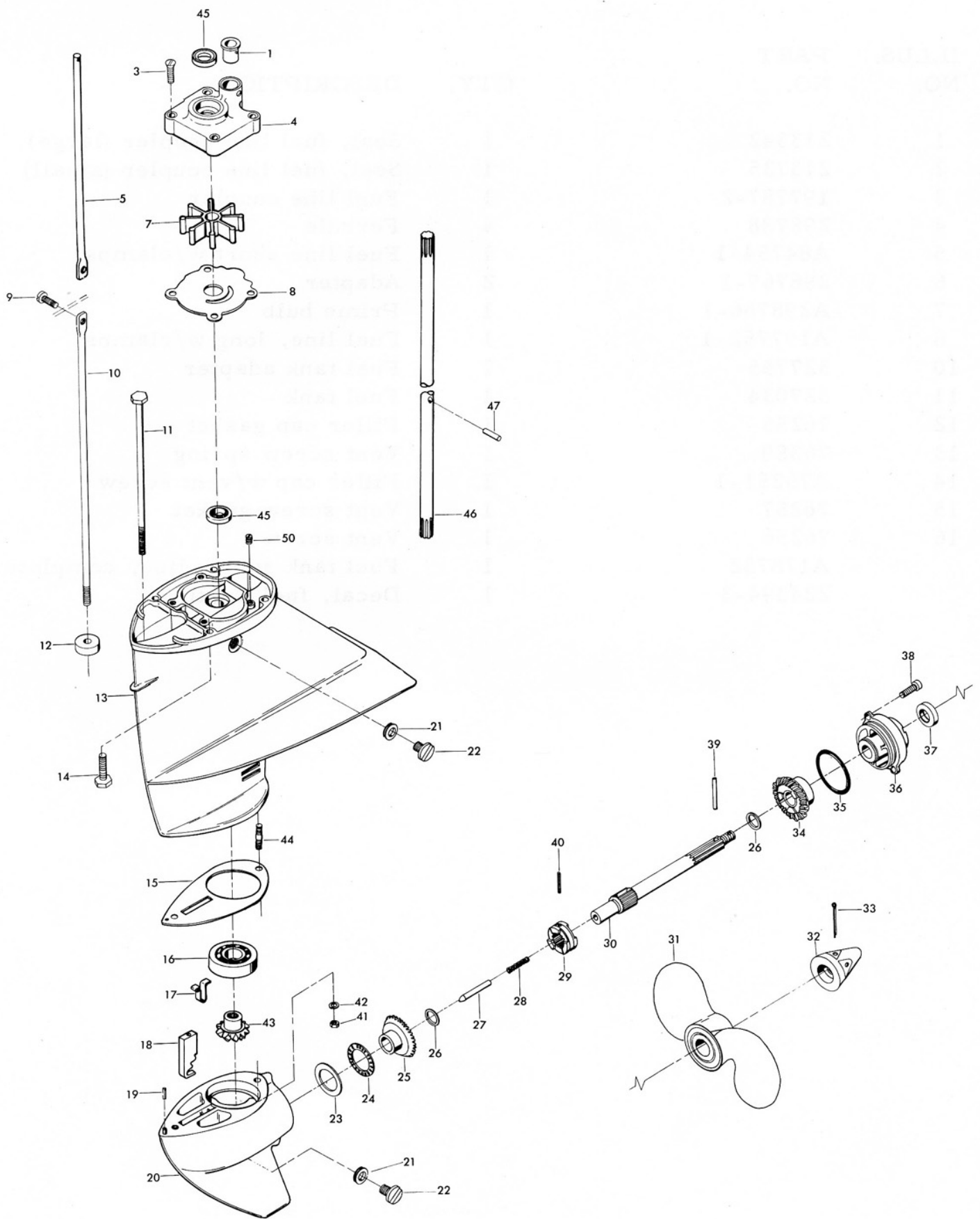
PART NO.	QTY.	DESCRIPTION	ILLUS. NO.	PART NO.	QTY.	DESCRIPTION
901938-1	8	Screw, cylinder head	36	286509	1	Link, throttle
8025	8	Plain washer	37	* 1107	8	Fill hd screw, 1/4 - 20 x 3/4
286518	1	Head, cylinder	38	* 1798	4	Fill hd screw, 5/16 - 18 x 1 1/4
286529-1	1	Gasket, cylinder head	39	* 286440	1	Stud, magneto control lever
1239	4	Hex hd screw, 1/4 - 20 x 5/8	40	* 286634	4	Screw, connecting rod
1502	3	Hex cap screw, 1/4 - 20 x 5/8	41	* A286655	1	Main bearing liner set (2 per set)
286222	1	Cover transfer port	42	* 286571	1	Roller set, main bearing (26 per set)
286223	1	Gasket, transfer port cover				
2A286471	1	Cover, cylinder drain w/check valves and screens	43	* A286018-1	1	Crankshaft w/upper main bearing Upper main bearing not sold separately. Contact factory for authorization to return crankshaft for installation of new bearing.
286472	1	Gasket, cylinder drain cover				
* 28004	1	Stud, interlock lever				
174227	2	Plug, spark - L-4-J				
* A319010	1	Cylinder w/crankcase cover, dowel pins, screws and studs	44	73082	1	Ring, magneto stator
* 1823	6	Hex cap screw, 5/16 - 18 x 1	45	286277	1	Gasket, crankshaft bearing cage
* 8559	2	Dowel pin	46	A286144	1	Cage, crankshaft bearing w/seal
* 31410	4	Retaining ring, piston pin	47	346146	1	Seal, crankshaft upper
* 174017	2	Pin, piston	48	1111	4	Fill hd screw, 1/4 - 20 x 7/8
2A286016	2	Rod, connecting w/cap and screws	49	84035-2	2	Bearing, interlock lever
* A286015	2	Piston	50	84026	2	Swivel, interlock rod bearing
* A286260	1	Piston ring set (6 per set)	51	1339	2	Hex nut, 10 - 24
* A286229	2	Connecting rod liner set (2 per set)	52	286531	1	Rod, interlock
* 286228	2	Roller set, connecting rod (26 per set)	53	197813	1	Bearing, interlock lever
* 343014	1	Bearing, crankshaft lower main	54	286977-1	1	Lever, interlock
141118	1	Seal, crankshaft lower	55	7008	1	Stop nut, 1/4 - 20
286154	2	Gasket, exhaust cover		G-286	1	Gasket set (not shown)
286151	1	Plate, exhaust		K-744	1	Engine touch-up paint spray bomb Frost White Flat
286152	1	Cover, exhaust				
901834	1	Clip, lead wire		K-746	1	Engine touch-up paint spray bomb Metallic Olive Gold
1240	8	Hex slot hd screw, 1/4 - 20 x 7/8				
286279	1	Gasket, cylinder mounting		C286010	1	Cylinder complete. Includes all items marked with an asterisk (*).
1803	1	Stop nut, 5/16 - 24				
286282	1	Washer				
286445	1	Link, magneto control rod				
A286081-1	1	Lever, magneto control				
183813	1	Bearing, magneto control lever				
1052	1	Fill hd screw, 1/4 - 20 x 1				

GRUPO 1000



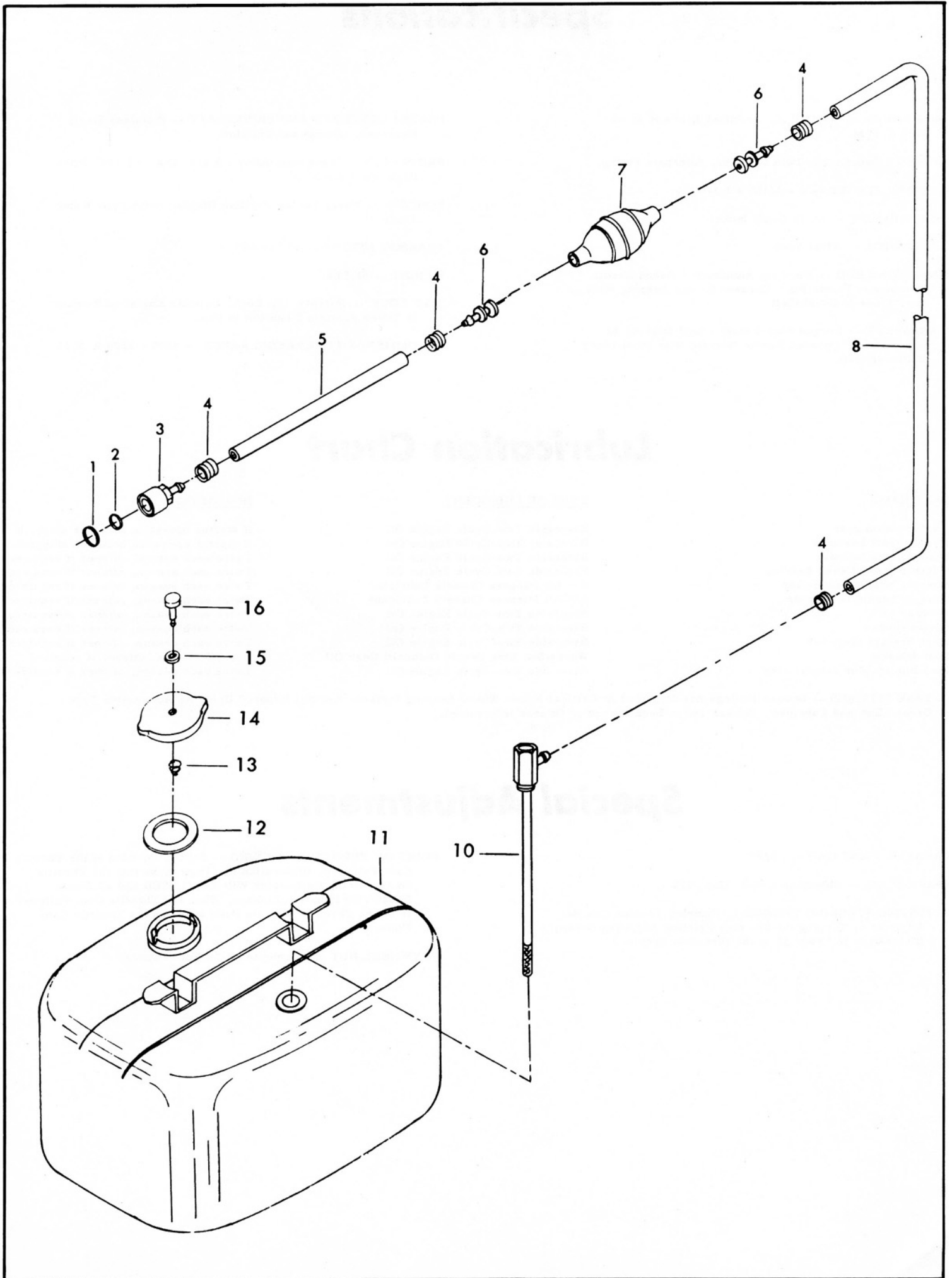
# Motor Leg

PART NO.	QTY.	DESCRIPTION	ILLUS. NO.	PART NO.	QTY.	DESCRIPTION
A392137	1	Grip, steering handle w/shaft	49	286914	1	Sleeve water line
307818	2	Bearing	50	286346	1	Shock mount lower
1859	2	Hex socket headless set screw	51	286422	1	Tilt lock pivot
A343178	2	Retainer	52	286451	1	Spacer, tilt lock
286815	1	Gear, steering handle shaft	53	286169	1	Bearing, swivel bracket
8538	2	Spring pin	54	213274	1	Grease fitting
286815	1	Gear, magneto control shaft	55	286300	1	Spring, reverse lock
1799	1	Truss hd screw, 5/16 - 18 x 5/8	56	286349	1	Reverse lock
392078	1	Steering handle bracket	58	283433	1	Bracket shallow water drive
286818	1	Bearing	59	1806	1	Groove pin
286224	1	Insert, steering handle pivot	60	A341510	1	Link, reverse lock
197813	1	Bearing	64	286286	2	Washer, stern bracket
286220	2	Washer, steering handle	65	1794	1	Spring pin
341693	1	Wedge, steering handle	66	286827	1	Reverse lock release lever
341816	1	Bearing, steering handle	69	A387742	1	Lever, reverse lock intermediate
8058	2	Int. tooth lockwasher	70	8538	1	Spring pin
1829	1	Fill hd screw, 10 - 24 x 7/8	71	286364	1	Lever, reverse lock
392079	1	Steering handle	73	1608	1	Square nut, 1/4 - 20
53795-1	1	Seal, steering handle grip dampener (large)	74	286573-1	1	Clamp, steering friction
8039	1	Plain washer	75	A286072	1	Swivel bracket w/grease fitting
286037	1	Stern bracket pivot bolt	76	1820	1	Fill hd screw, 1/4 - 20 x 1 3/8
A286032	1	Stern bracket stbd. w/clamp screw, foot and handle	77	2A286133	1	Motor leg w/water line
286422	1	Tilt lock pivot	78	286169	1	Bearing, swivel bracket
1666	1	Bowed spring washer	79	197813	2	Bearing
286541-1	1	Tilt lock	80	1794	1	Spring pin
286451	1	Spacer, tilt lock	81	901307-2	1	Seal, driveshaft
286544	1	Spring, tilt stop	82	286414	1	Spring, leg water bracket
A286532	1	Stern bracket port w/clamp screw, foot and handle	83	286347	2	Shock mount upper
392647	1	Carrying handle	84	286868	1	Spring, steering handle stop
195075	1	Handle, clamp screw	85	197813	2	Bearing, steering handle stop
197073	2	Clamp screw w/foot	86	286490	1	Steering handle stop
8555	2	Spring pin	87	286080	1	Screw, steering handle pivot
8536	2	Spring pin	88	1807	1	Groove pin
66480	2	Stud clamp screw	89	1805	1	Spring pin
24074	2	Clamp screw foot	90	A286582	1	Steering arm w/spring pin
7005	1	Stop nut, 3/8 - 16	91	1238	2	Hex cap screw, 1/4 - 20 x 3/4
A286113	1	Lock bar w/handle and spring	92	8060	2	Ext. tooth lockwasher
8540	1	Spring pin	93	286539	1	Bumper
286461	1	Spring, lock bar handle	94	392838	1	Magneto control shaft
286114	1	Lock bar handle	95	307818	1	Bearing
286019	1	King pin	96	1475	1	Fill hd screw, 10 - 24 x 1/2
1341	2	Hex nut, 1/4 - 20	97	286011	1	Washer, swivel bracket
286956	2	Bracket, shock mount lower	98	8538	1	Spring pin
1844	2	Hex bolt, 1/4 - 20 x 2 3/8		392894	1	Steering handle indicator (not shown)
8083	2	Spring lockwasher				
286244	1	Water line		392387	1	Decal tilt release



# Gear Housing

ILLUS. NO.	PART NO.	QTY.	DESCRIPTION
1	55914	1	Seal, inlet water line
3	1150	4	Flat hd screw, 1/4 - 20 x 1 1/8
4	A343060	1	Water pump body w/seal
5	286615	1	Gear shift rod upper
7	901065-1	1	Water pump impeller
8	341562	1	Water pump back plate
9	1556	1	Fill hd screw w/lockwasher
10	286705	1	Gear shift rod lower
11	1800	1	Hex bolt, 1/4 - 20 x 7
12	286618-1	1	Seal, gear shift rod lower
13	A286554-2	1	Gear housing upper w/bearing, seal, plug and washer
14	1199	4	Hex hd screw, 1/4 - 20 x 1
15	286555	1	Gasket, gear housing
16	* 127910-2	1	Ball bearing
17	* 286895	1	Spring cam detent
18	* 286721	1	Clutch shift cam
19	* 8553	1	Spring pin
20	* A286054	1	Gear housing lower w/bearing, plug and spring pin
21	* 8077	2	Nyltite washer
22	* 50109	2	Gear housing plug
23	* 286903	1	Race, propeller shaft bearing
24	* 286901	1	Bearing, radial, propeller shaft
25	* A286023	1	Bevel gear front w/bearing
26	* 901717	2	Thrust washer
27	* 286728	1	Clutch shift pin
28	* 901719-2	1	Clutch spring
29	* A286521	1	Clutch
30	* 286098-1	1	Propeller shaft
31	A286265-1	1	Propeller
32	A286094	1	Propeller nut w/cotter pin
33	1846	1	Cotter pin
34	* A286662	1	Bevel gear rear w/bearing
35	* 286305	1	Seal, prop shaft bearing cage
36	* A286298	1	Propeller shaft bearing cage w/bearing and seal
37	* 346118	1	Seal, propeller shaft
38	* 1802	2	Fill hd screw, 1/4 - 20 x 9/16
39	A324101	1	Propeller pin, pack of 3
40	* 8555	1	Spring pin
41	* 1490	1	Hex nut, 1/4 - 20
42	* 8063	1	Spring lockwasher
43	* A286266	1	Gear, bevel pinion w/bearing
44	286008	1	Stud, gear housing rear
45	901307-2	2	Seal, water pump and driveshaft
46	343128	1	Driveshaft
47	901563	1	Water pump impeller drive pin
	C286054	1	Gear housing lower complete, includes all items marked with an asterisk (*).





# Fuel Tank

ILLUS. NO.	PART NO.	QTY.	DESCRIPTION
1	213342	1	Seal, fuel line coupler (large)
2	213735	1	Seal, fuel line coupler (small)
3	197787-2	1	Fuel line coupler
4	298788	4	Ferrule
5	A84754-1	1	Fuel line short w/clamps
6	298769-1	2	Adapter
7	A298766-1	1	Prime bulb
8	A197752-1	1	Fuel line, long w/clamps
10	327755	1	Fuel tank adapter
11	327034	1	Fuel tank
12	76256	1	Filler cap gasket
13	76389	1	Vent screw spring
14	A76251-1	1	Filler cap w/vent screw
15	76257	1	Vent screw gasket
16	76256	1	Vent screw
	A178752	1	Fuel tank supply line, complete
	224394-3	1	Decal, fuel mixture

# Specifications

HORSEPOWER -- 9.6 O. B. C. Certified Brake H. P. at 4750 R. P. M.

ENGINE -- Two-Cycle, Twin Cylinder, Alternate Firing.

BORE AND STROKE -- 2 - 3/16" x 1 3/4".

DISPLACEMENT -- 13.15 Cubic Inches.

CARBURETOR -- Float Feed.

CONNECTING ROD -- Die Cast Aluminum - Dased Needle Bearings at Piston Pin. Uncased Needle Bearing With Steel Lines at Crankshaft.

CRANKSHAFT -- Forged Nickel Steel - Ball Bearing At Upper Main. Uncased Needle Bearing With Steel Lines at Center Main.

PROPELLER SHAFT AND DRIVESHAFT -- Stainless Steel, Hardened, Ground and Polished.

PROPELLER -- Aluminum Alloy - 8 1/4" Dia. x 8 1/4" Pitch, Right Hand Rotation.

COOLING -- Water Cooled Positive Displacement Type Water Pump.

TRANSOM HEIGHT -- 15" or 20".

WEIGHT -- 58 Lbs.

TILT LOCK -- Positive Tilt Lock, Permits Engine to Remain In Tilted Position When Not In Use.

RECOMMENDED OPERATING RANGE -- 4300 - 5200 R. P. M.

# Lubrication Chart

## PART NAME

## TYPE OF LUBRICANT

## HOW OFTEN

Starter pinion gear	Riverside Two-Cycle Engine Oil	If starter operation becomes sluggish
Starter spool bearings	Riverside Two-Cycle Engine Oil	If starter operation becomes sluggish
Throttle cam follower	Riverside Two-Cycle Engine Oil	Twice each season, oftener if required
Magneto control shaft bearing	Riverside Two-Cycle Engine Oil	Twice each season, oftener if required
Steering handle pinion gear	EP-All Purpose Chassis Lubricant	Twice each season, oftener if required
Steering handle bevel gear	EP-All Purpose Chassis Lubricant	Twice each season, oftener if required
Reverse lock	Riverside Two-Cycle Engine Oil	Twice each season, oftener if required
Clamp screws	Riverside Two-Cycle Engine Oil	Twice each season, oftener if required
Stern bracket pivot bolt	Riverside Two-Cycle Engine Oil	Twice each season, oftener if required
Gear housing	Wards Sea King Hypoid Outboard Gear Oil	Every 30 hours, oftener if required
Fuel line coupler release ring	Riverside Two-Cycle Engine Oil	Twice each season, oftener if required

GREASE FITTINGS -- Grease Fittings Are Provided At Critical Points Where Bearing Surfaces Are Not Exposed Using An Automotive Type Grease Gun and Lubricant, Grease Twice Each Season or Oftener if Required.

# Special Adjustments

BREAKER POINT GAP -- .020".

SPARK PLUG -- Champion L-4-J, Gap .030".

ADJUSTING STEERING TENSION -- Steering Tension Can Be Adjusted by Turning the Steering Friction Adjusting Screw, Illustration 76, Page 13 in the Direction Required.

POINT OF THROTTLE OPENING -- Set the Position of the Throttle Cam Follower, Illustration 48, Page 9, so that the Throttle Shutter in the Carburetor Will Be CLOSED and all Slack REMOVED from the Linkage, When the Throttle Cam Follower is on the Throttle Pick-Up Point Mark on the Throttle Cam Plate.

FLYWHEEL NUT -- Torque to 40-50 Foot Pounds.